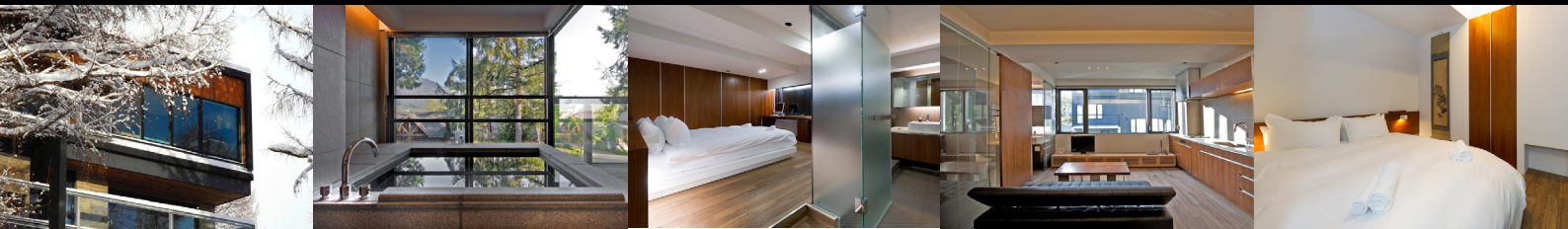




Setsugetsu | Factsheet

Open since 2008



Beautifully Modern & Contemporary Japanese Design

Designed by the acclaimed architect Nakayama Makoto, this delightful property boasts top quality modern appliances, peaceful surroundings and fantastic views, while only minutes away from all restaurants, bars, and the Ace Family ski slope. This eight-bedroom property can be rented entire to sleep up to 17, or in parts including the four-bed penthouse, three bedroom luxury apartment and single-bed studio for two with kitchenette.



SETSUGETSU

Building Amenities:

Split Level Apartments | Panel and Radiant Heating | Fully Equipped Kitchen | Coffee Machine | High Speed WiFi | DVD Player | Complimentary DVD Library | iPod Speaker and Charger | Dry Room | Two Car Garage | Mt Yotei Views | Central Hirafu Location

Category Type	Level	Approx m ²
Studio	L2	35m ²
3 Bedroom Apartment	L2-3	182m ²
4 Bedroom Penthouse	L3-4	216m ²

Click [here](#) to discover more about Setsugetsu

Hirafu Village, Niseko, Japan
reservations@nisade.com | +81 136 23 1724 | skype: connect.nisade
www.nisade.com | Japanese Real Estate License # 329

